



NAUTILUS® Marine Crane Model 7000L

A high-capacity Nautilus crane for a new world of offshore challenges.

The Nautilus 500-ton Model 7000L is sized and designed for today's offshore lift vessels and loads, including installation of wind turbine generators, platform decommissioning, wireline, crane operations, pipe-laying, diver support platforms, workover and coiled tubing rigs.

Oil States' Nautilus 7000L offers state-of-the-art features that represent the culmination of more than two years of engineering. The crane is equipped with a PLC control system with dual CPUs, offering a horsepower management system that matches load, speed and available horsepower across multiple function inputs. The system detects if one or more of the motors are at maximum power and makes hydraulic system adjustments accordingly to protect the motors.



Nautilus® Marine Crane, Model 7000L

Advanced Features

- API 2C monogrammed and ABS cargo gear-certified
- 500-ton capacity main hook
- 25-ton/50-ton dual capacity auxiliary hook
- 140 ft. boom length (capable of 250 ft.)
- Oil States Skagit SMATCO designed main and boom hoists
- Hydraulic oil filtration system with condition monitoring and alarms
- "Inching Mode" slows the speed of crane functions to a minimum to enable very precise lifts and installations
- Three redundant 300HP electric motors allow full crane functionality with only two motors, eliminating downtime in the event of a motor failure
- Independent dual tigger system controls cargo movement
- Three redundant 300HP electric motors allow full crane functionality with only two motors, eliminating downtime in the event of a motor failure



The 7000L is scaled and engineered for the offshore needs of tomorrow and beyond.



Nautilus Crane 7000L on the Montco Liftboat 'Robert'

- Hydraulic system and equipment are primarily contained with the cone design, allowing easy access as well as environmental protection
- The hydraulic system is equipped with cooling systems for 24 hour operation in up to 55C operation (131 degrees Fahrenheit)
- Operator controlled boom tip camera system for load monitoring

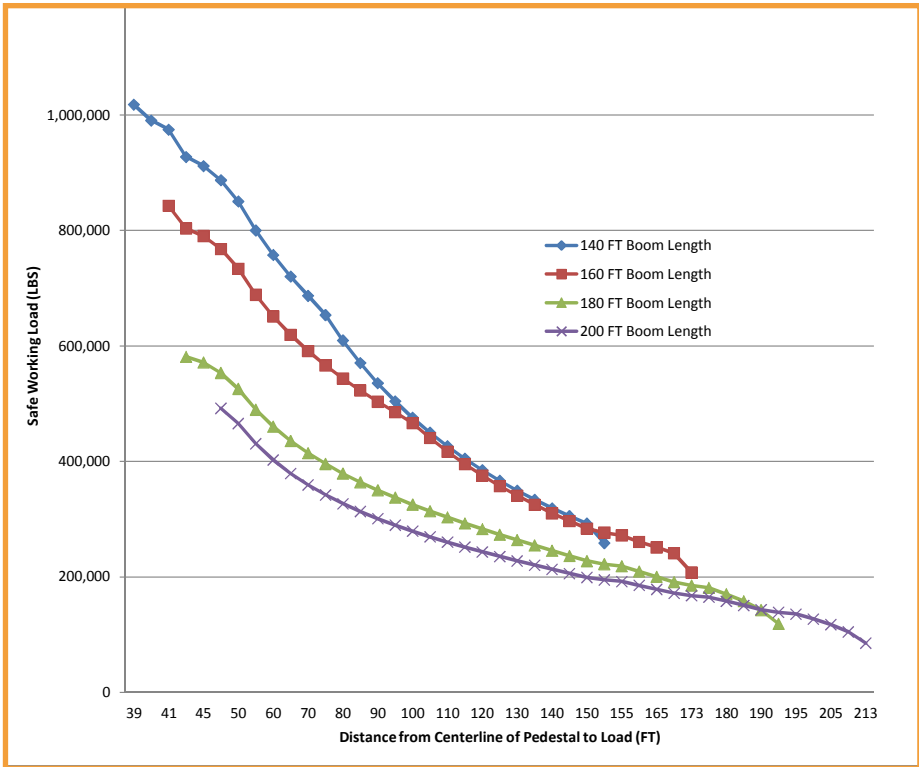




Oil States Skagit SMATCO

NAUTILUS® Marine Crane Model 7000L

Curve Rating Chart Nautilus Marine Crane, Model 7000L



The Nautilus 500-ton model 7000L is sized and designed for today's demanding offshore lift vessels and loads.



Solutions for all your lifting and handling requirements – marine cranes, winches, mooring systems and more:

- New & Used Equipment Sales
- Rental Solutions
- Repair, Refurbishment, Parts & Service

Oil States Skagit SMATCO delivers a diverse range of deck equipment solutions backed by convenient, certified and warranted repair, refurbishment, parts and service.

When reliability matters, call Oil States.

Oil States Skagit SMATCO's manufacturing, engineering, sales and service facility with waterfront access.

Oil States Skagit SMATCO
 Manufacturing, Engineering, Sales & Service
 1180 Mulberry Road
 Houma, Louisiana 70363 USA
 TEL: (985) 868 0630 FAX: (985) 868 9733

Sales Office
 1155 Dairy Ashford, Ste. 700
 Houston, Texas 77079 USA
 TEL: (713) 510 2200 FAX: (713) 510 2307

Email: skagitsmatco.houston@oilstates.com



www.oilstates.com