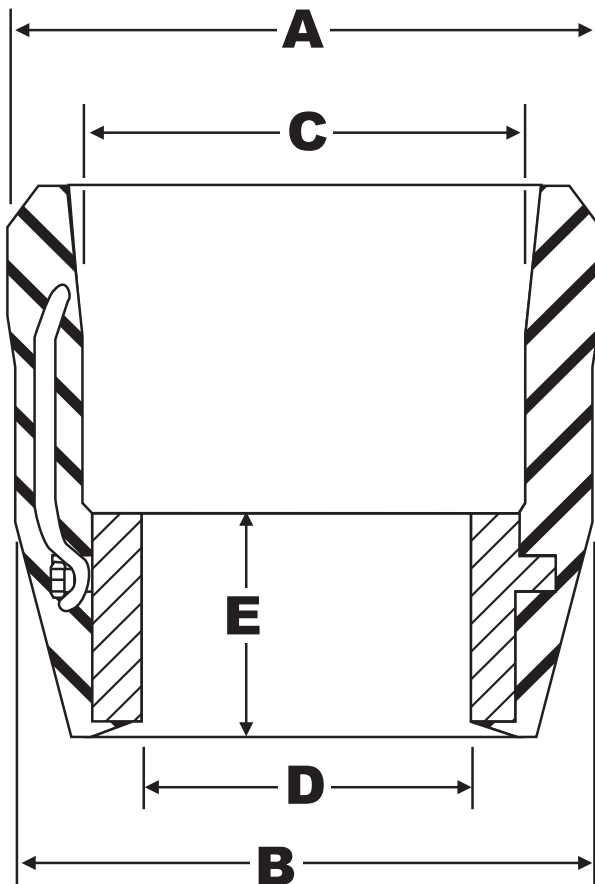


OSI Packer Cups

Packer Cups

Oil States packer cups are molded from a durable oil, gas and abrasion resistant rubber compound that withstands wear and tear, even under high pressure. Each is equipped with a sturdy steel base for additional support in the critical area where the wires connect to the cup base. Oil States offers over fifty individual cups, ranging from 2 3/8" tubing thru 13 3/8" casing, with optional I.D. sizes from many popular casing sizes.

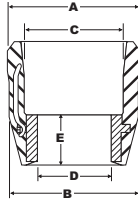
*Special compounds are available on request. High pressure cups are also available on certain sizes.



2 3/8" - 6 5/8" Cups								
Nominal Tubing/ Casing O.D.	Wt. Range Lb/Ft	Tubing/ Casing I.D.	Part Number	All dimensions shown are nominal only and subject to change without notice				
				A	B	C	D	E
2 3/8"	4.6-4.7	1.995	P-204-1	2.01	1.88	1.28	1.09	0.87
2 7/8"	6.4-6.5	2.441	P-254-1	2.46	2.29	1.67	1.34	1.25
3 1/2"	7.7	3.068	*P-304-2	3.19	2.91	1.75	1.34	1.30
			*P-304-S-1			2.31	1.94	1.22
	9.2-9.3	2.992	P-304-1	3.05		1.75	1.34	1.31
			P-304-S	3.01		2.21	1.94	1.24
10.2	2.992	P-304-1	3.05	1.75	1.34	1.31		
		P-304-S	3.01	2.21	1.94	1.24		
4"	9.5	3.548	P-354-1	3.58	3.53	2.62	1.94	1.31
	11.0	3.476	P-404-1	3.51	3.43	2.25		1.29
	13.4	3.340	*P-404-2	3.41	3.20	2.60		
4 1/2"	9.5	4.090	P-454-1	4.18	3.90	2.66	2.41	1.46
	11.6	4.000		3.93	3.72			1.51
	16.6	3.826	*P-454-DP	3.93	3.72			
5"	13.0	4.494	P-504-1	4.52	4.37	2.66	2.41	1.46
	15.0	4.408		4.52	4.37	2.66		
	18.0	4.276	P-504-2	4.37	4.15	2.67		1.39
	20.3	4.184		4.37	4.15	2.67		
5 1/2"	13.0	5.044	P-554-1	5.10	4.91	3.28	2.90	1.44
	15.0	5.012		5.01	4.83			
	15.5	4.950	P-554-2	5.01	4.83			
	17.0	4.892						
	20.0	4.778	P-554-2A	4.95	4.64			
23.0	4.670							
6"	15.0	5.524	*P-604-1	5.65	5.41	3.52	2.90	1.46
	18.0	5.424						
6 5/8"	20.0	6.049	P-658-2	6.12	5.91	4.18	3.53	1.43
	24.0	5.921	P-658-3	6.00	5.70	4.06	3.53	1.38
			*P-658-3A		5.60	4.23	4.03	
			*P-658-3C		5.60	4.18	2.90	1.43
	28.0	5.791	P-658-3		5.70	4.06	3.53	1.38
			*P-658-3A		5.60	4.23	4.03	
*P-658-3C			5.60		4.18	2.90	1.43	

*Available special order only.

OSI Packer Cups



7" - 8 5/8" Cups									
Nominal Tubing/ Casing O.D.	Wt. Range Lb/Ft	Tubing/ Casing I.D.	Part Number	All dimensions shown are nominal only and subject to change without notice					
				A	B	C	D	E	
7"	17.0	6.538	P-704-1	6.60	6.39	4.06	3.53	1.38	
			*P-704-1C	6.57	6.30	4.21	2.90	1.44	
	20.0	6.456	P-704-1	6.60	6.39		3.53	1.38	
			*P-704-1C	6.57	6.30	4.06	2.90	1.44	
	22.0	6.398	P-704-1A	6.52	6.27		3.53	1.38	
			*P-704-1B	6.50	6.22	4.45	4.03	1.44	
	24.0	6.336	P-704-1A	6.52	6.27	4.06			
			*P-704-1B	6.22	4.45	4.03	3.53	1.38	
	26.0	6.276	P-704-2	6.34	6.09	4.06			
			*P-704-2A			4.19	4.03	1.40	
			*P-704-2C				2.90		
	29.0	6.184	P-704-2			4.06	3.53	1.38	
			*P-704-2A			4.19	4.03	1.40	
	32.0	6.094	*P-704-2C			4.06	2.90	1.38	
	35.0	6.004	P-658-2	6.12	5.91	4.18		3.53	1.43
38.0	5.920	P-658-3	6.00	5.60	5.70	4.06			
		*P-658-3A			4.23	4.03	1.38		
		*P-658-3C			4.18	2.90	1.43		
7 5/8"	24.0	7.025	P-758-1	7.15	6.92	4.61		2.04	
	26.4	6.969		7.15					
	29.7	6.875	P-758-2	6.90	6.74	4.63	3.53	2.00	
	33.7	6.765							
39.0	6.625	*P-758-3	6.73	6.51			1.96		
8 5/8"	20.0	8.191	P-904-1	8.24	8.02	5.04	3.53	1.57	
			*P-904-1B						4.53
	28.0	8.017	P-858-1	8.03	7.67	5.30	5.30	1.56	
			*P-858-1A				5.75		5.53
			P-858-1B				5.30		3.53
	36.0	7.825	P-858-1			5.30	4.53		
			*P-858-1A			5.75	5.53		
	40.0	7.725	P-858-1B			5.30	3.53		
			*P-858-2				4.53		
	44.0	7.625	*P-858-2B	7.76	7.49	5.35	3.53		
*P-858-2									4.53
		*P-858-2B				3.53			

*Available special order only.

9 5/8" - 13 3/8" Cups									
Nominal Tubing/ Casing O.D.	Wt. Range Lb/Ft	Tubing / Casing I.D.	Part Number	All dimensions shown are nominal only and subject to change without notice					
				A	B	C	D	E	
9 5/8"	29.3	9.063	P-958-2	9.21	8.67	5.02	3.53	1.77	
			*P-958-2A	9.23		5.77	5.53	1.62	
			P-958-2B				4.53		
	36.0	8.921	P-958-2	9.21		5.02	3.53	1.77	
			*P-958-2A	9.23	5.77	5.53	1.62		
			P-958-2B			4.53			
			*P-958-4	9.03	8.60	5.79	5.53	1.64	
	40.0	8.835	P-958-1A	8.90	8.45	5.03	5.53	1.81	
			P-958-1				4.53		
			P-958-1B			3.53			
			*P-958-4	9.03	8.60	5.79	5.53	1.64	
	43.5	8.755	P-958-1A	8.90	8.45	5.03	5.53	1.81	
			P-958-1				4.53		
			P-958-1B			3.53			
			*P-958-4	9.03	8.60	5.79	5.53	1.64	
	47.0	8.681	P-958-1A	8.90	8.45	5.03	5.53	1.81	
P-958-1			4.53						
P-958-1B					3.53				
*P-958-3			8.80	8.42	5.80	5.53	1.64		
P-958-3A						4.53			
P-958-3B						3.53			
53.5	8.535	*P-958-3				5.53	1.64		
		P-958-3A	8.80	8.42	5.80	4.53			
		P-958-3B				3.53			
10 3/4"	40.5	10.050	P-1075	10.17	9.71	5.83	4.53	1.64	
	55.5	9.760	P-1075-B				3.53		
	60.7	9.660	P-1075			4.53			
	73.2	9.406	P-1075-A	9.85	9.30	4.53			
11 3/4"	38.0	11.150	P-1175-1	11.25	10.50		6.12	4.53	1.65
			*P-1175-1B				5.95	3.53	1.71
	54.0	10.880	P-1175-1						6.12
		*P-1175-1B			5.95	3.53	1.71		
12"	40.0	11.384	*P-1200	11.82	11.38		4.53	1.69	
			*P-1200-B	11.38	10.38	7.22	3.53		
13 3/8"	54.5	12.615	P-1338-1	12.68	12.29	7.10	4.53	1.72	
	72.0	12.347	P-1338-1						

*Available special order only.