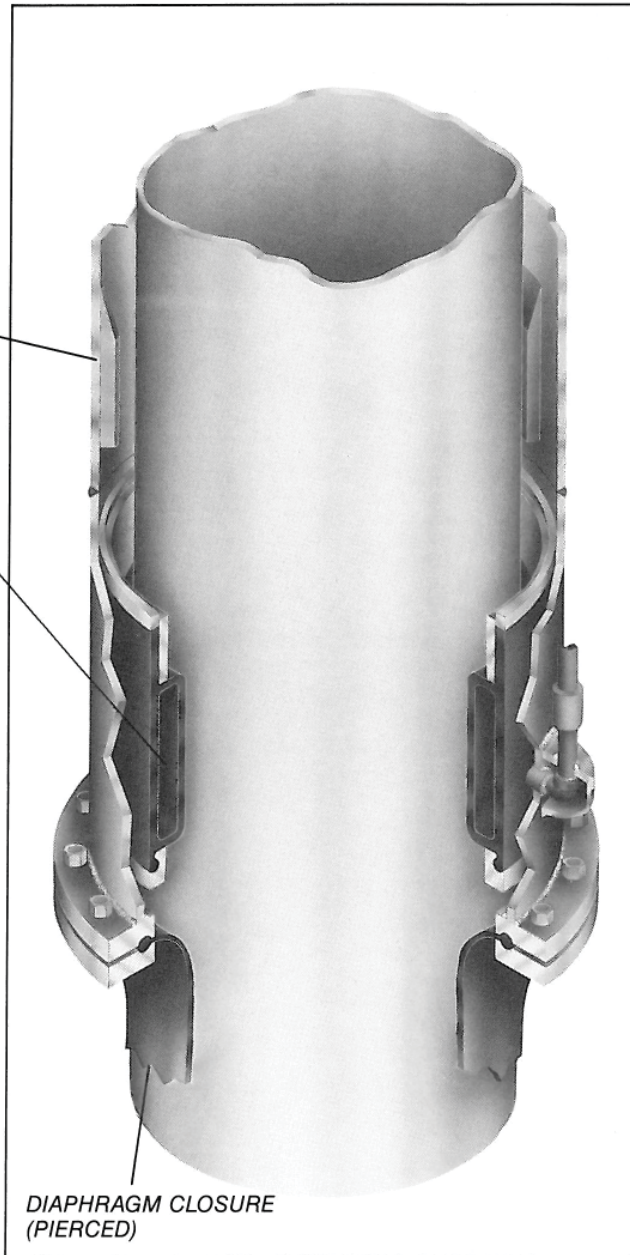




Inflatable Grout Packers



GUIDE SHIMS

NYLON REINFORCED
HEAVY DUTY
PACKER ELEMENT

DIAPHRAGM CLOSURE
(PIERCED)

Inflatable Grouting Packers by Oil States Industries provide a fast, reliable, and robust seal between the I.D. of the jacket leg or skirt and the O.D. of the driven pile. Inflatable Grouting Packers have been used successfully on hundreds of platforms worldwide over the last 25 years.

Saves Time and Money

Efficient use of construction barge time is accomplished by performing single-stage grouting operations. The Oil States' packer provides a cost effective seal which is not limited by water depths or grout weights.

Ease of Operation

After the pile is driven, the grouting packer is inflated by gas or liquid. The inflation operation may be initiated from the jacket work deck through stainless steel tubing or carbon steel pipe or by sub-sea ROV or diver connections. The inflatable

seal is confirmed prior to grouting operations with the use of pressure gauges located at the surface or a subsea manifold.

Custom Designs/ Unequaled Experience

In addition to manufacturing a reliable grouting packer, Oil States is widely recognized for its custom designed packer applications, including:

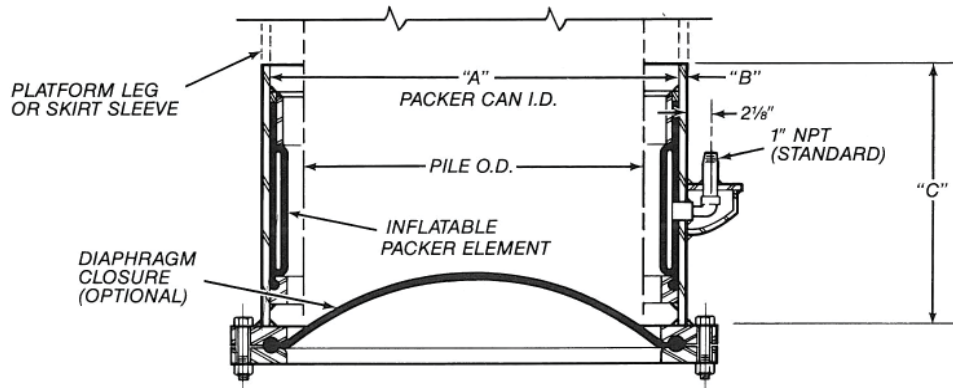
- 180 inch diameter packers

- inflation pressures to 1400 psig
- cyclic inflation service
- maintaining acceptable operating pressures up to one year

Oil States has designed and manufactured more inflatable grouting packers than all other manufacturers combined. Our sealing technology is an important reason why the offshore industry continues to rely on Oil States. Worldwide, no other grout packer manufacturer can offer a more significant history of successful offshore sealing performance.



Inflatable Grouting Packers



PILE SIZE		A		B*		C		GUIDE SHIM MAXIMUM I.D.		PACKER ASS'Y. EST. WEIGHT†	
in.	mm	in.	mm	in.	mm	in.	mm	in.	mm	lbs.	kg
16	406	21	533	.75	19	24	610	17	432	498	226
18	457	23	584	.75	19	24	610	19	483	544	247
22	559	27	686	.75	19	24	610	23	584	637	289
24	610	30	762	.75	19	24	610	26	660	707	321
30	762	35	889	.75	19	24	610	31	787	825	374
30	762	36	914	.75	19	24	610	32	813	849	385
36	914	41	1041	.75	19	24	610	37	940	966	438
38	965	44	1118	.75	19	24	610	40	1016	1036	470
40	1016	45	1143	.75	19	24	610	41	1041	1060	481
42	1067	46	1168	.75	19	24	610	43	1092	980	445
42	1067	47	1194	.75	19	24	610	43	1092	1106	502
42	1067	48	1219	.75	19	24	610	44	1118	1071	486
44	1118	49	1245	.75	19	24	610	45	1143	1153	523
44	1118	50	1270	.75	19	24	610	46	1168	1177	534
46	1168	52	1321	.75	19	24	610	48	1219	1223	555
48	1219	52.5	1334	.75	19	24	610	49.5	1257	1180	535
48	1219	54	1372	.75	19	24	610	50	1270	1271	577
53	1346	58.5	1486	.75	19	24	610	54.5	1384	1376	624
54	1372	58.5	1486	.75	19	24	610	55.5	1410	1314	596
54	1372	59.5	1511	.75	19	24	610	55.5	1410	1400	635
56	1422	62	1575	1.00	25	24	610	58	1473	1797	815
60	1524	66	1676	1.00	25	30	762	62	1575	2339	1061
62	1575	68	1727	1.00	25	24	610	64	1626	1926	874
66	1676	72	1829	1.00	25	30	762	68	1727	2549	1156
66	1676	74	1880	1.00	25	30	762	70	1778	2619	1188
72	1829	78	1981	1.00	25	30	762	74	1880	2761	1252
72	1829	79	2007	1.00	25	30	762	75	1905	2796	1268
74	1880	80	2032	1.00	25	30	762	76	1930	2831	1284
78	1981	84	2134	1.50	38	30	762	80	2032	4146	1881
78	1981	85	2159	1.50	38	30	762	81	2057	4198	1904
84	2134	90	2286	1.50	38	30	762	86	2184	4428	2009
84	2134	91	2311	1.50	38	30	762	87	2210	4477	2031
87	2210	93	2367	1.50	38	36	914	89	2261	5217	2366
96	2438	102	2591	1.50	38	30	762	98	2489	4992	2264
96	2438	104	2642	1.50	38	34	864	100	2540	5724	2596
102	2591	108	2743	1.50	38	30	762	104	2642	5103	2315
104	2642	110	2794	1.50	38	30	762	106.5	2705	4907	2226
104	2642	112	2845	1.50	38	36	914	108	2743	6268	2843
108	2743	114	2896	1.50	38	30	762	110	2794	5383	2442
120	3048	127	3226	1.50	38	30	762	123	3124	6298	2857

When ordering Grouting Packers, furnish O.D. and I.D. of jacket leg, pile O.D., and water depth. Oil States will then provide a detailed drawing of the proposed installation. Some applications may require transition rings.

*Dimension B can vary with test pressure requirements.

†Estimated weight can vary with application and test pressures.



www.oilstates.com